



The Grove, Palmers Green, London, N13
£849,995 Freehold

Anthony Webb
ESTATE AGENTS

The Grove, Palmers Green, London, N13

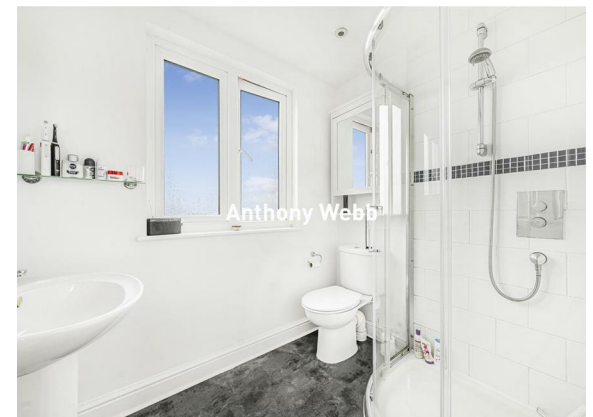
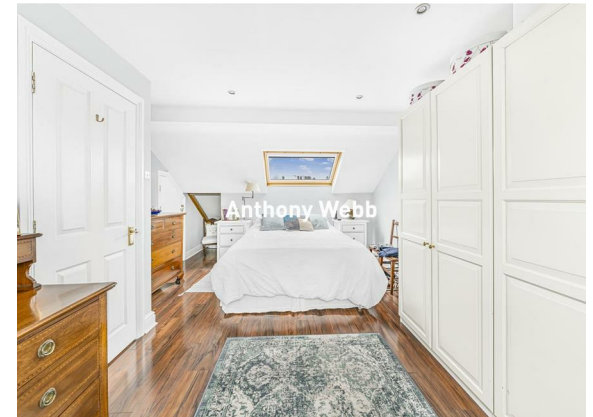
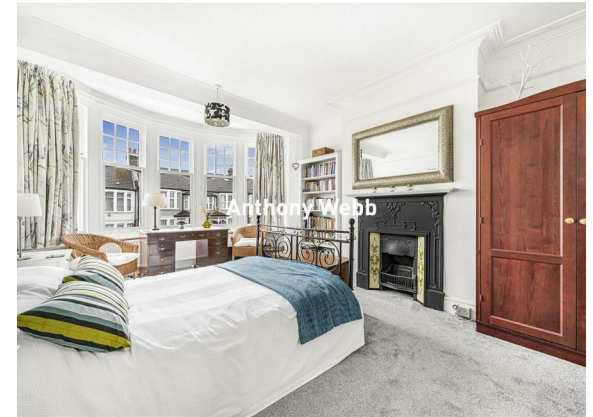
A beautifully presented four bedroom Edwardian period family house offering an extended kitchen/diner, large through lounge, two bath/shower rooms, off street parking and a well maintained rear garden.

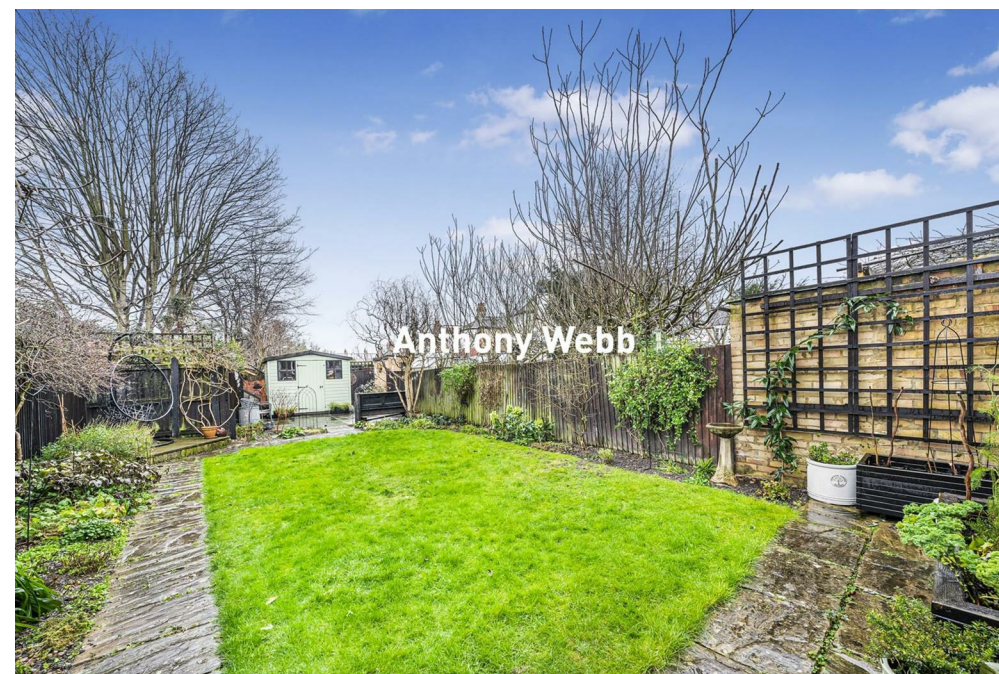
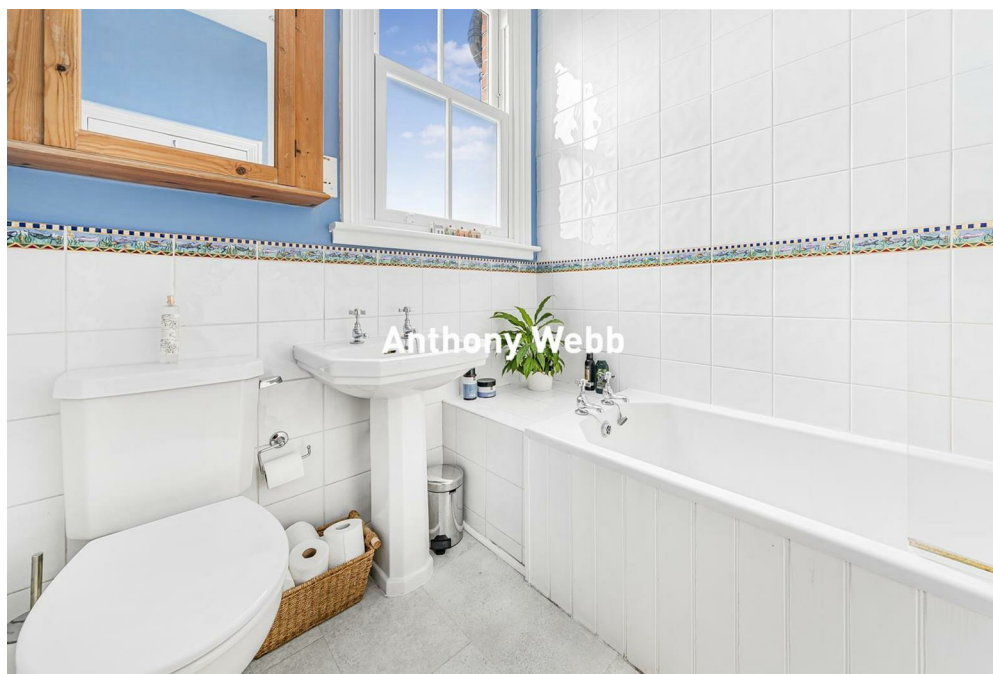
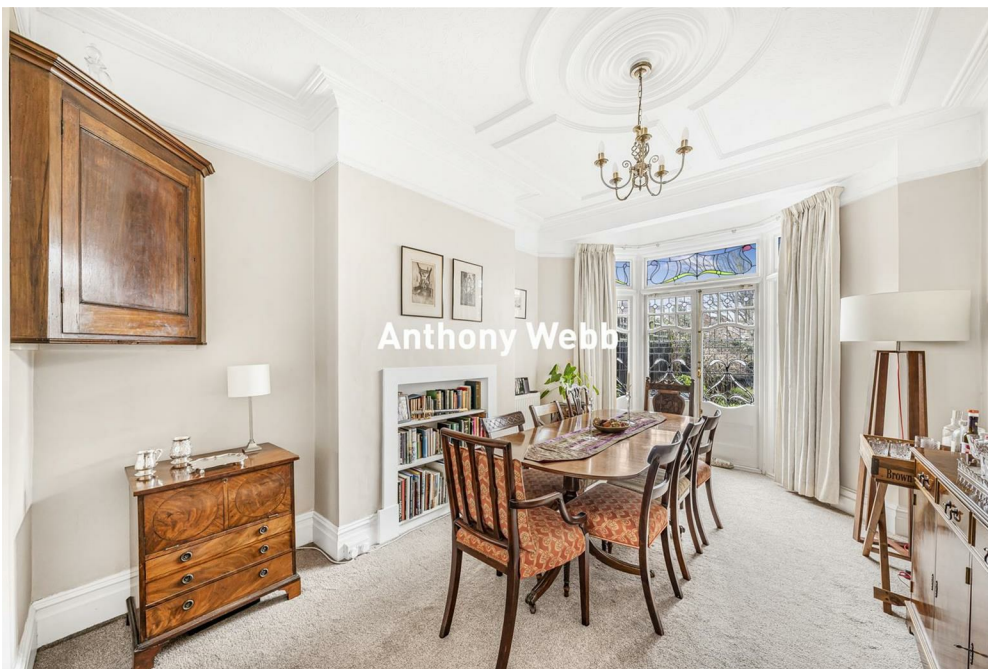
The Grove is a most desirable residential turning located between Hazelwood Lane and Riverway. The property is a short walk to Green Lanes shops, restaurants and Palmers Green mainline station into Moorgate. Green spaces are well catered for with Broomfield Park, Hazelwood recreation ground and The New River within a few minutes walk. The property falls within the Hazelwood Primary School catchment area.

Impressive hallway with original tessellated tiled floor • Ground floor modern cloak room • Front reception with large bay window and feature fireplace • Spacious reception/dining room with French doors to garden • Modern extended kitchen/diner • First floor landing • Two good size double bedrooms and one single room • The converted loft offers a further double bedroom with wood floor, skylight and shower room • Block paved drive to front • Rear raised patio area with stairs down to rear garden measuring 60'0" x 20'0" in total • Rear access to garden from Lodge Drive.

Enfield council tax band: E

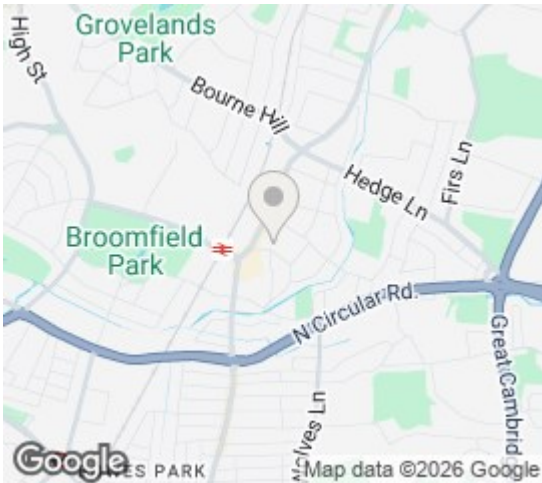
- Four bedrooms
- Edwardian terraced house
- Two interconnecting receptions
- Extended kitchen/diner
- Ground floor guest cloak room
- Two modern bath/shower rooms
- Off street parking
- Rear garden



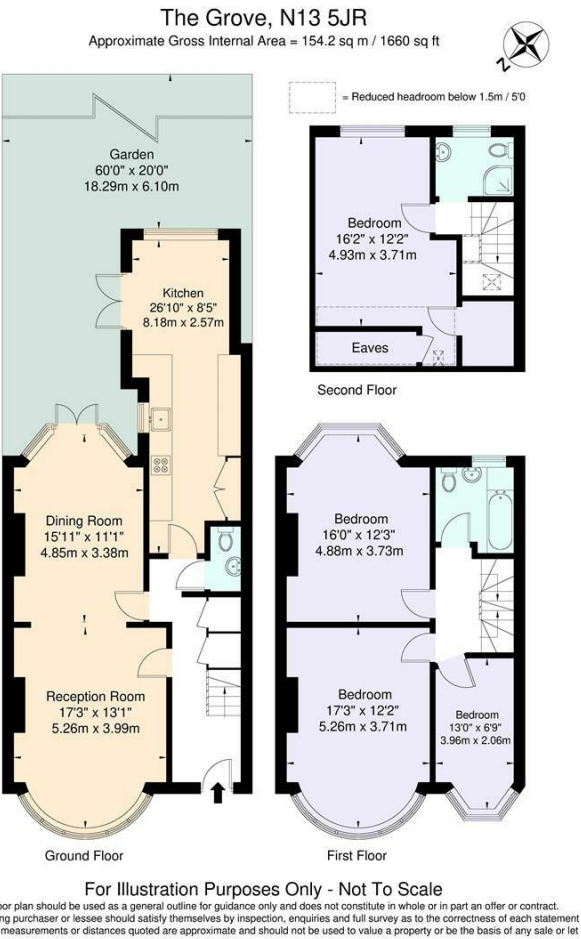


The Grove
Palmers Green
London
N13 5JR

Tenure: Freehold
Gross Internal Area: 1660.00 sq ft



Energy Efficiency Rating		
	Current	Potential
Very energy efficient - lower running costs		
(82 plus) A		
(61-81) B		
(59-80) C		
(55-58) D		
(50-54) E		
(47-49) F		
(1-46) G		
Not energy efficient - higher running costs		
England & Wales EU Directive 2002/91/EC		
Environmental Impact (CO ₂) Rating		
	Current	Potential
Very environmentally friendly - lower CO ₂ emissions		
(82 plus) A		
(61-81) B		
(59-80) C		
(55-58) D		
(50-54) E		
(47-49) F		
(1-46) G		
Not environmentally friendly - higher CO ₂ emissions		
England & Wales EU Directive 2002/91/EC		



Property particulars as supplied by Anthony Webb Estate Agents are set out as a general outline in accordance with the Property Misdescriptions Act (1991) only for the guidance of intending purchasers of lessees, and do not constitute any part of an offer or contract. Details are given without any responsibility, and any intending purchasers, lessees or third parties should not rely on them as inspection or otherwise as to the correctness of each of them. We have not carried out a structural survey and the services, appliances and specific fittings have not been tested. All photographs, measurements, floor plans and distances referred to are given as a guide only and should not be relied upon for the purchase of carpets or any other fixtures statements or representations of fact, but must satisfy themselves by or of fittings, gardens, roof terraces, balconies and communal gardens as well as tenure and lease details cannot have their accuracy guaranteed for intending purchasers. Lease details, service ground rent (where applicable) are given as a guide only and should be checked and confirmed by your solicitor prior to exchange of contracts. no person in the employment of Anthony Webb has any authority to make any representation or warranty whatever in relation to this property.

348 Green Lanes, Palmers Green, London N13 5TJ
020 8882 7888
palmersgreen@anthonywebb.co.uk
anthonywebb.co.uk

